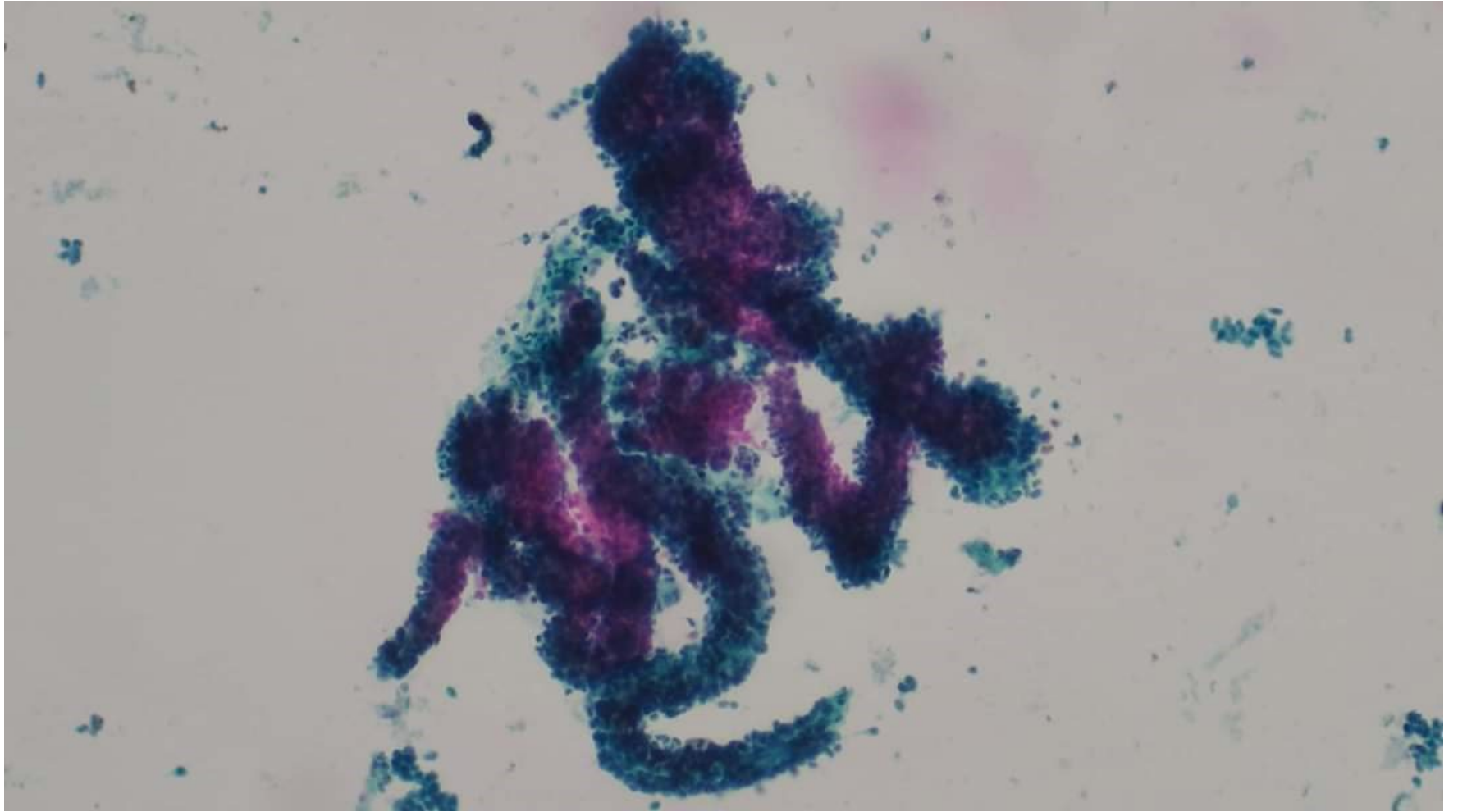


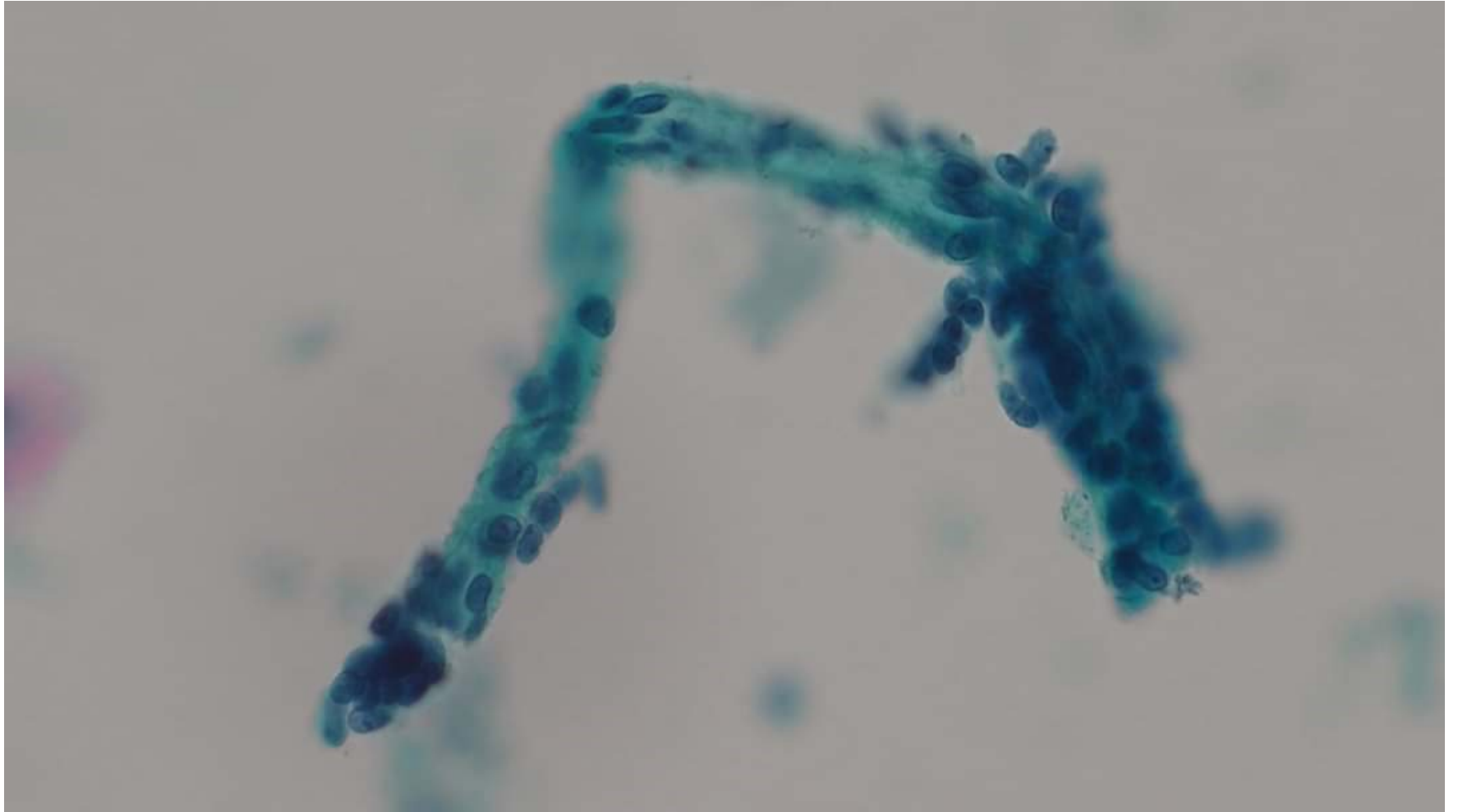
每月一例 2022 June

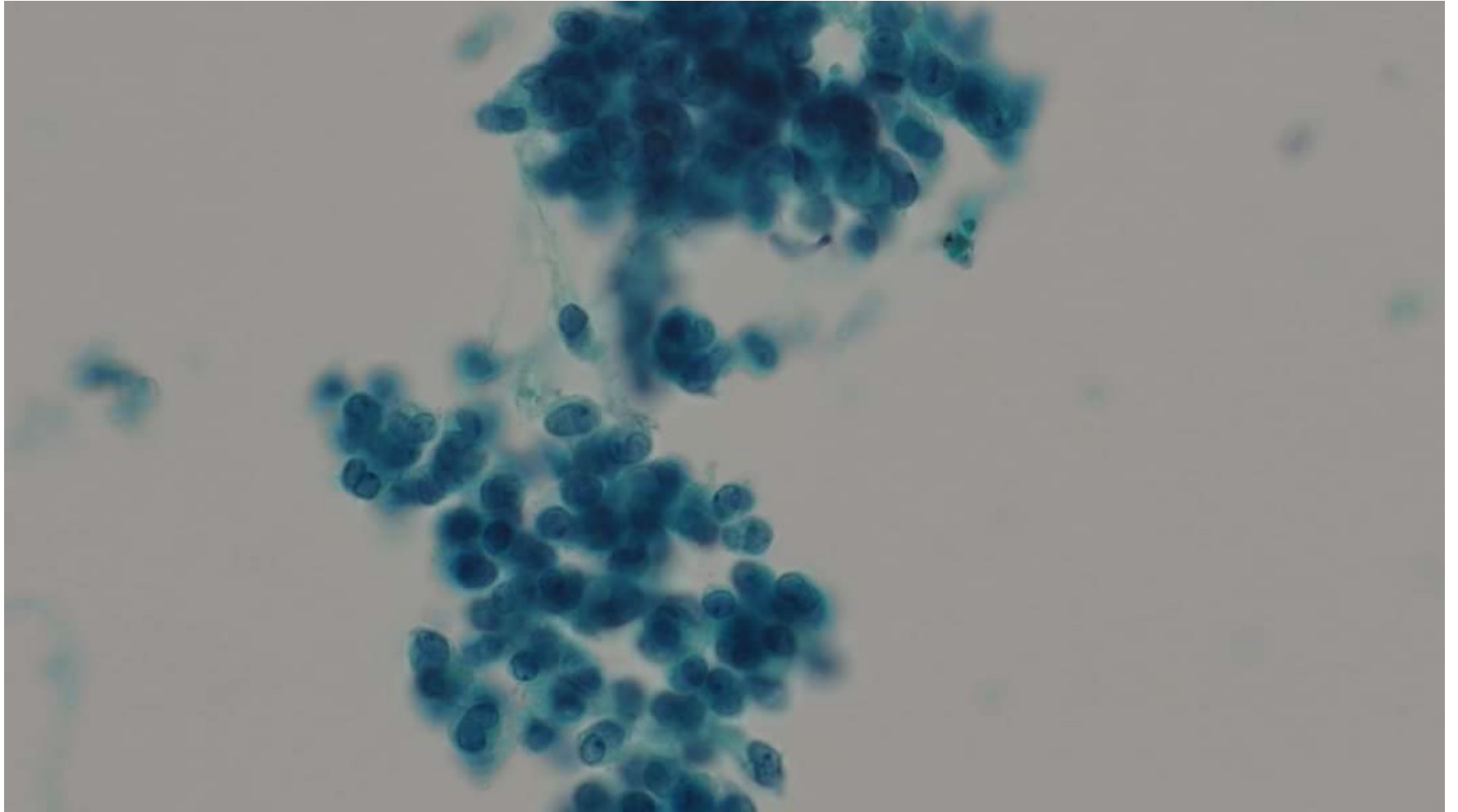
- 18 y/o female
- Pancreatic tumor
- FNAC
- Figure 1-4

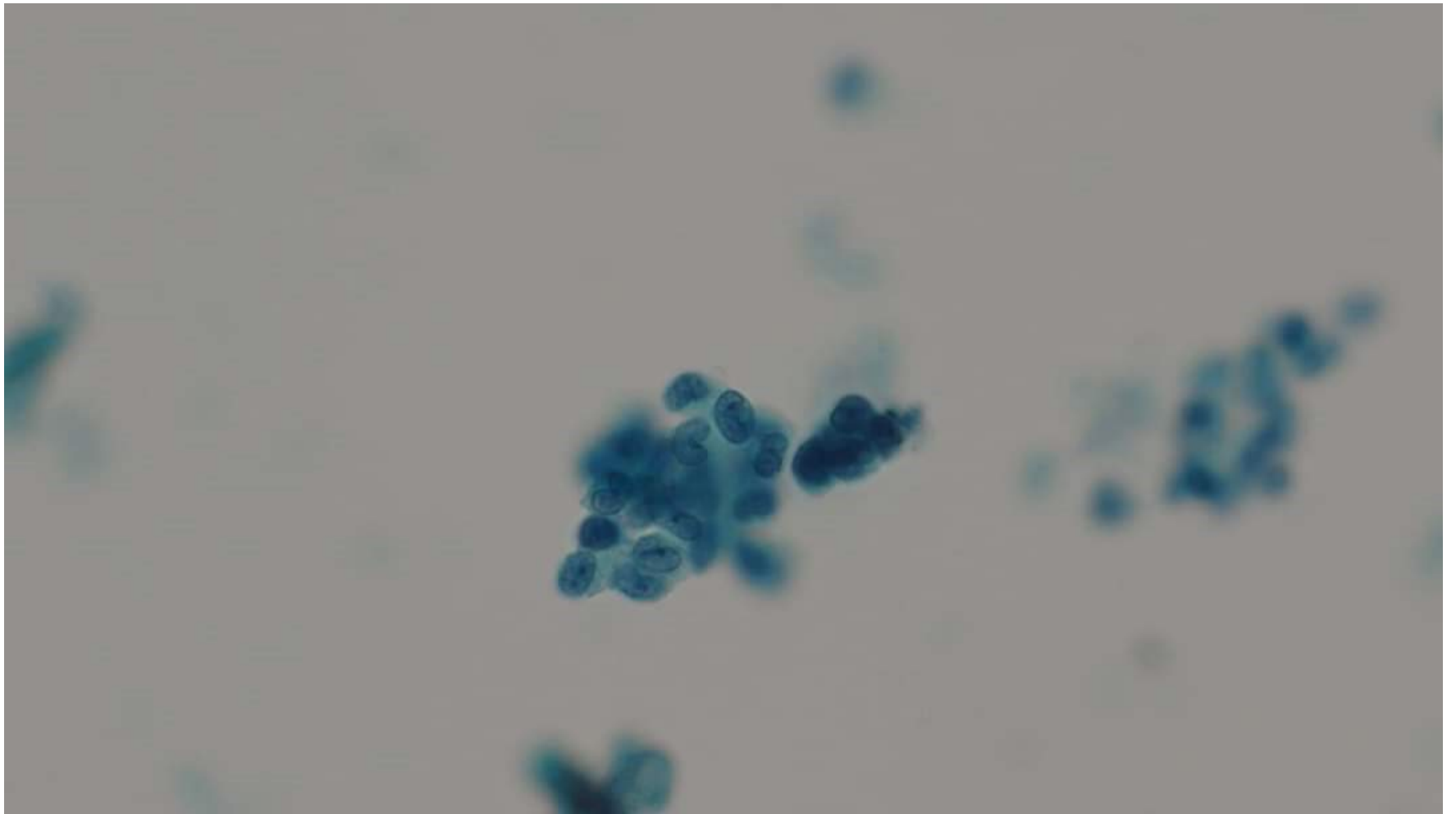
Contributed by

Dr. 賴薇安 (Taiwan CytoClub)









Your interpretation ?

Solid pseudopapillary neoplasm (SPN)

-
- Cells are present both individually as well as in tissue fragments.
 - When present, large fragments demonstrate branching vessels with a loosely attached layer of neoplastic cells, resulting in multiple slender papillae which overlap with one another.
 - The neoplastic cells are monotonous and can be plasmacytoid in appearance.
 - The nuclei are round to oval with regular borders and bland chromatin.
 - The cells are uniform with round to oval nuclei that can have nuclear grooves and delicately vacuolated cytoplasm.
-

References

