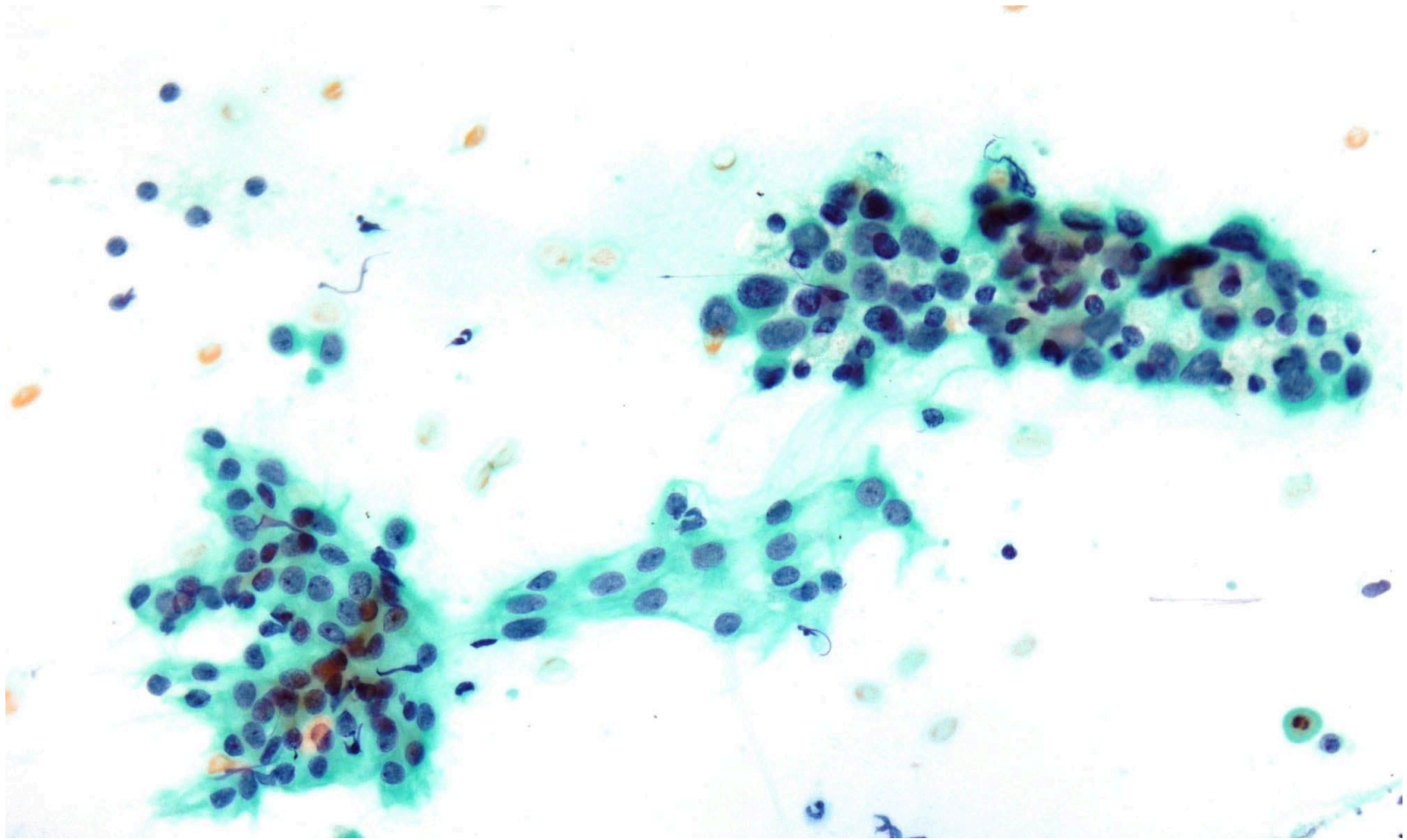
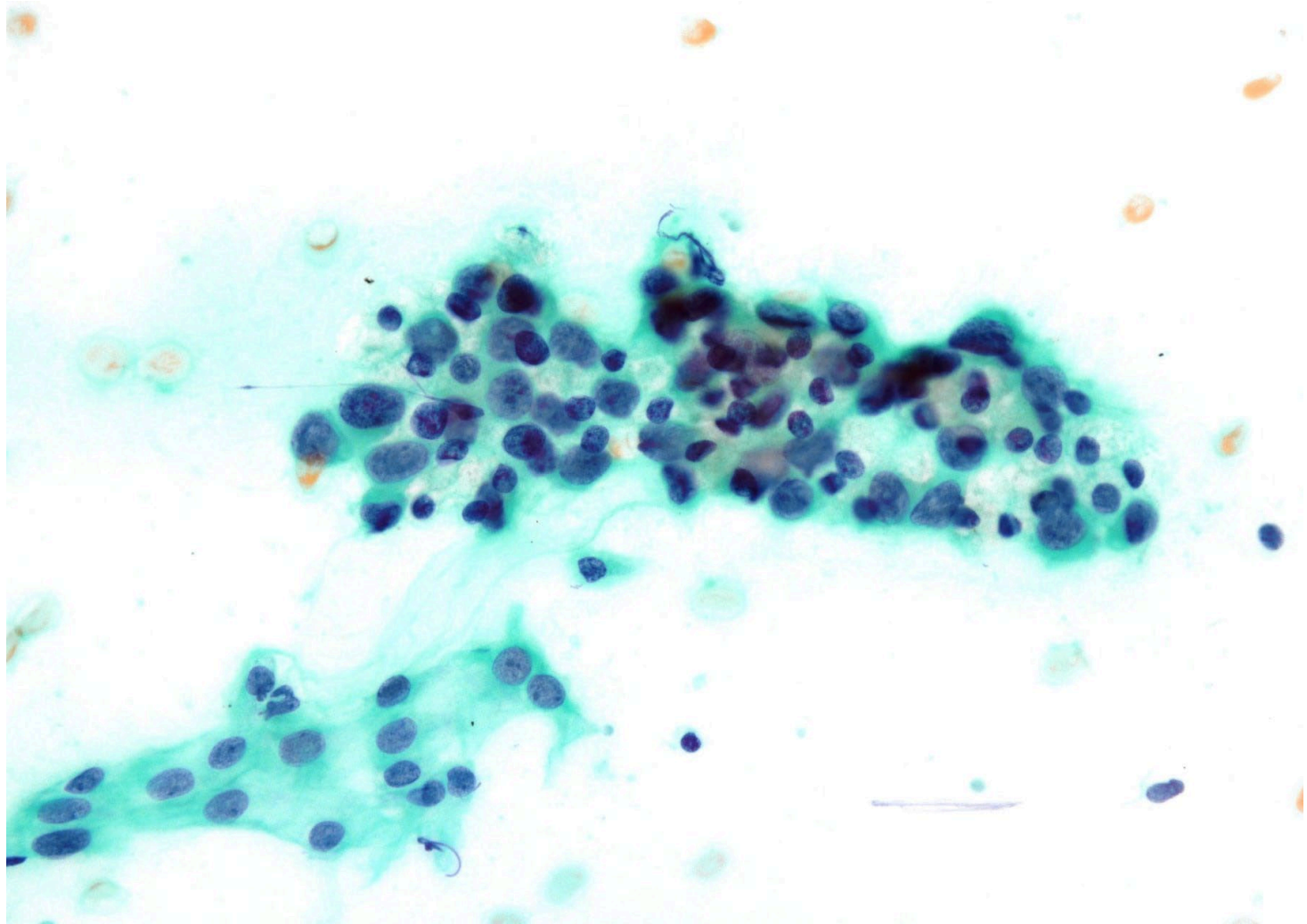


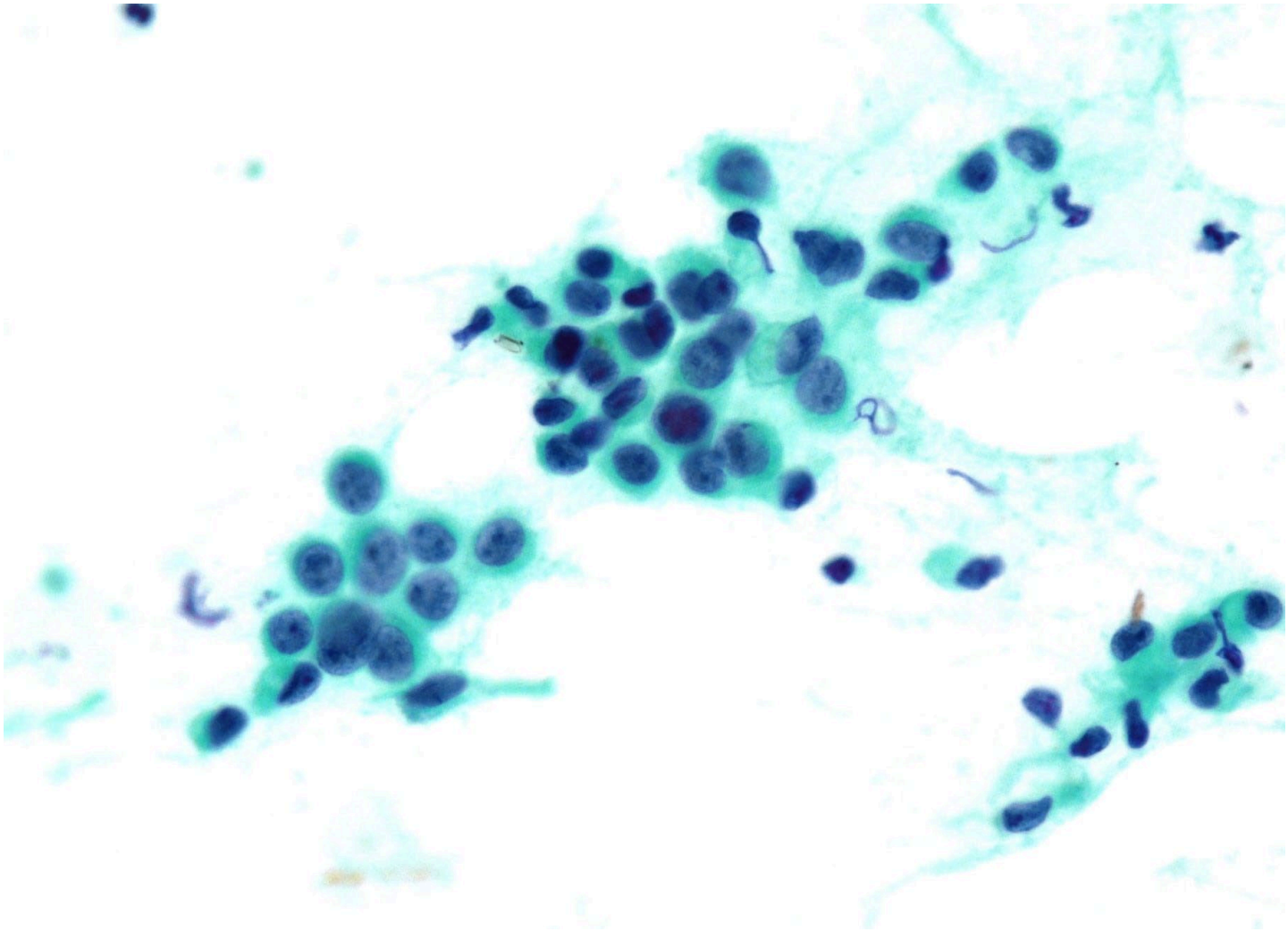
每月一例 2022 February

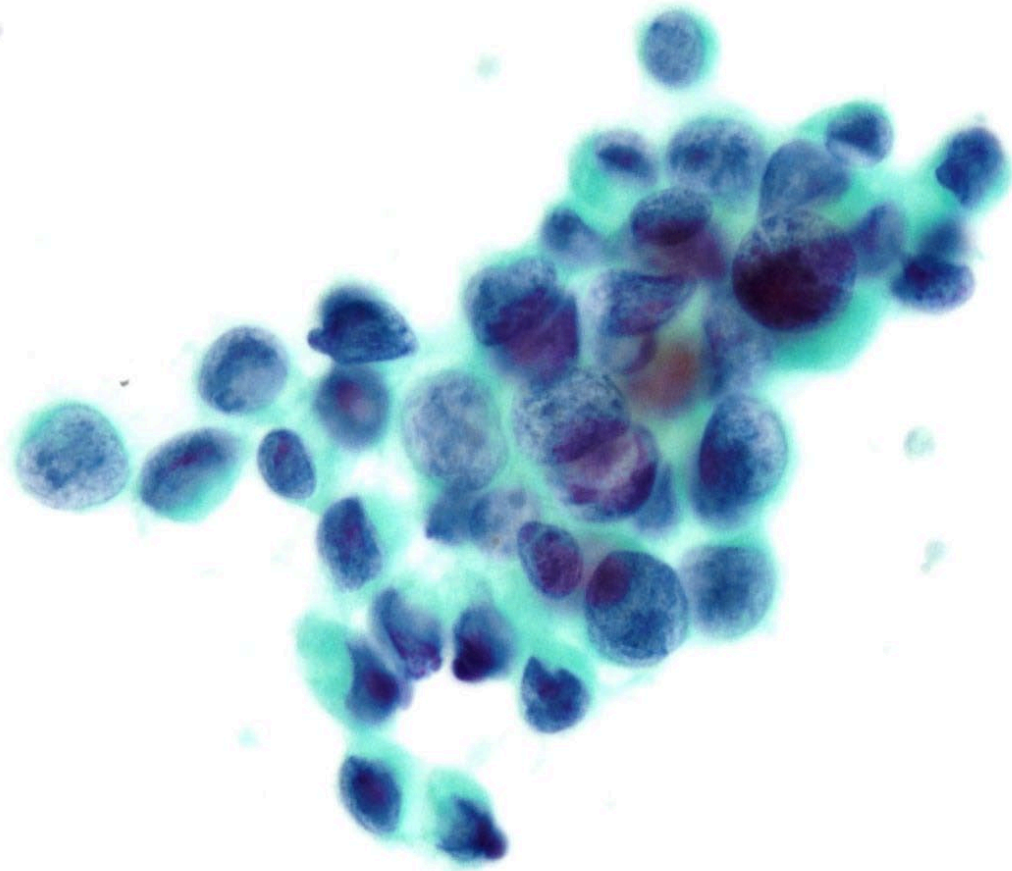
- 54 y/o female
- History of breast cancer
- Pap smear: HSIL or Glandular lesion? or Metastatic breast cancer?
- Figure 1-7

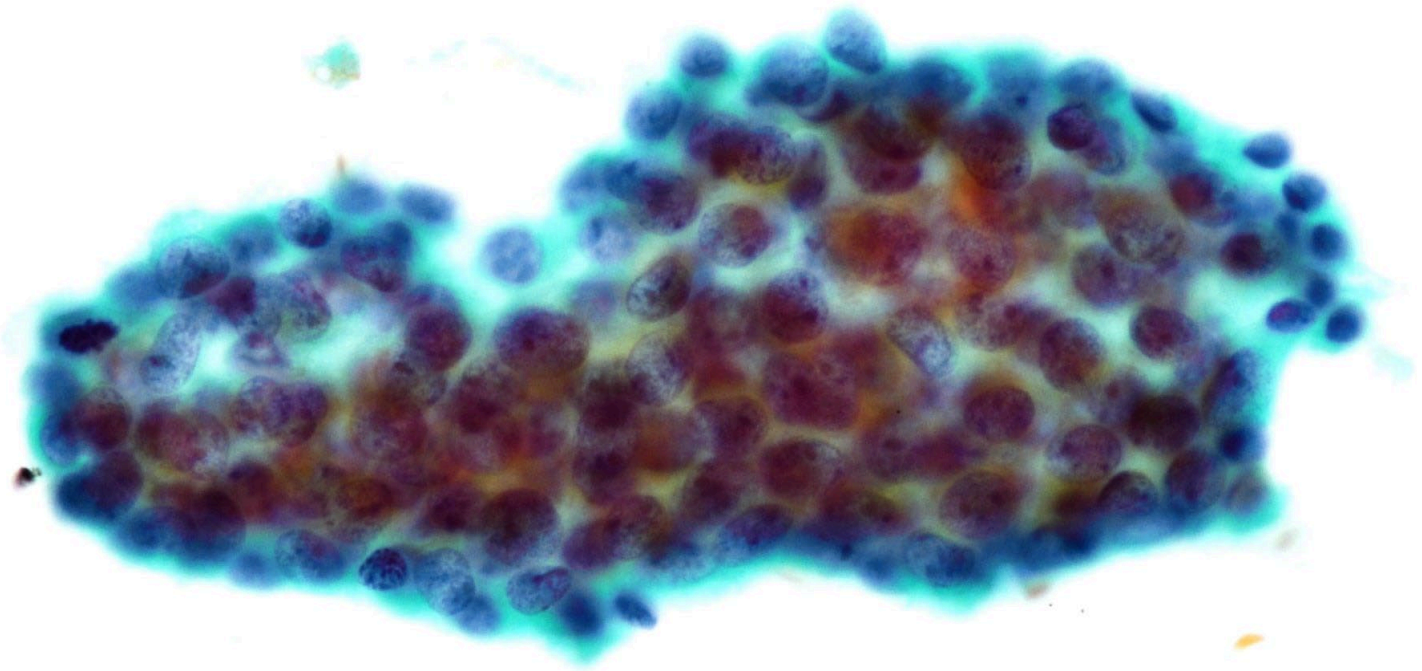
Contributed by
Dr. 賴瓊如 (Taiwan CytoClub)

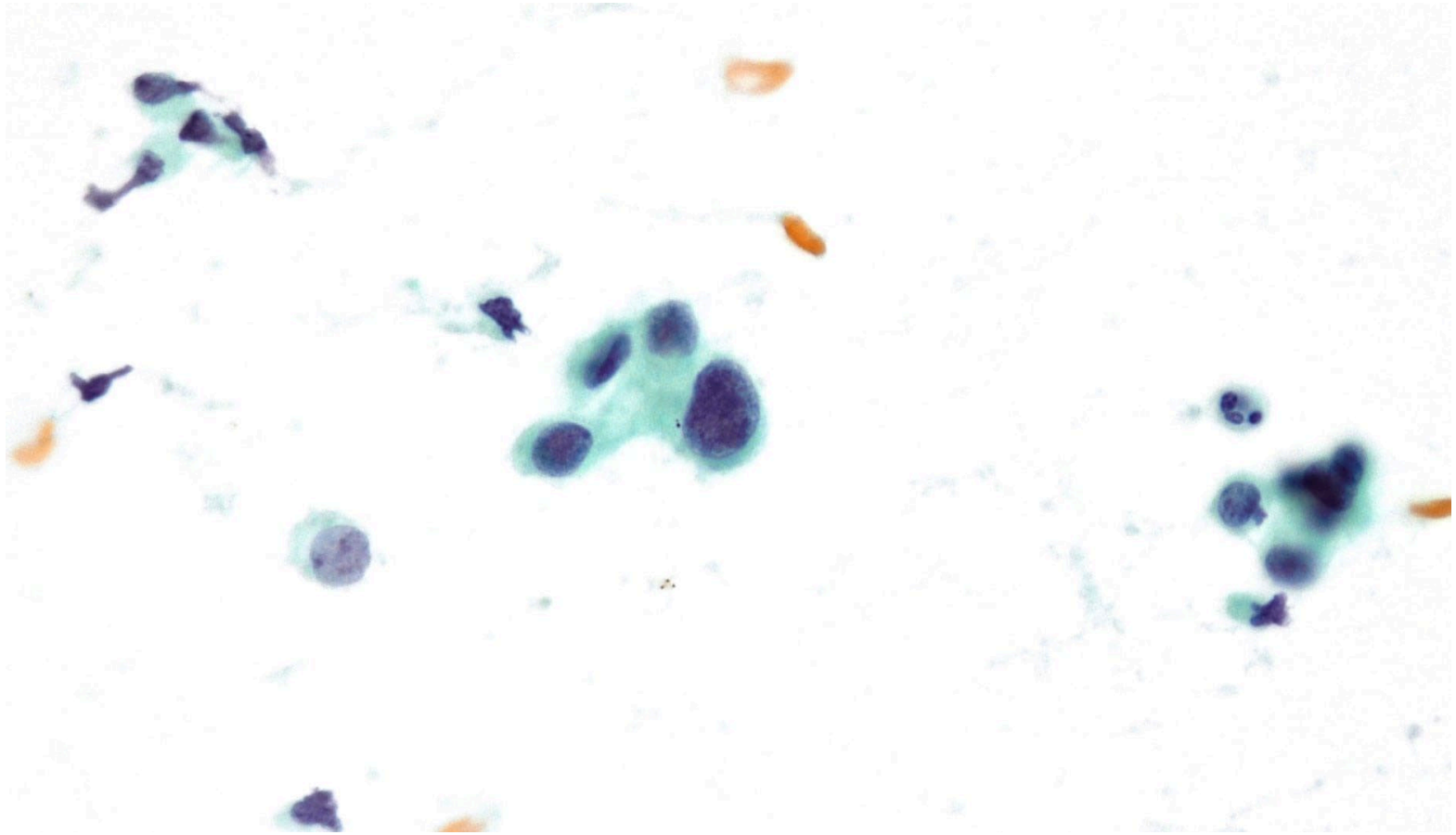


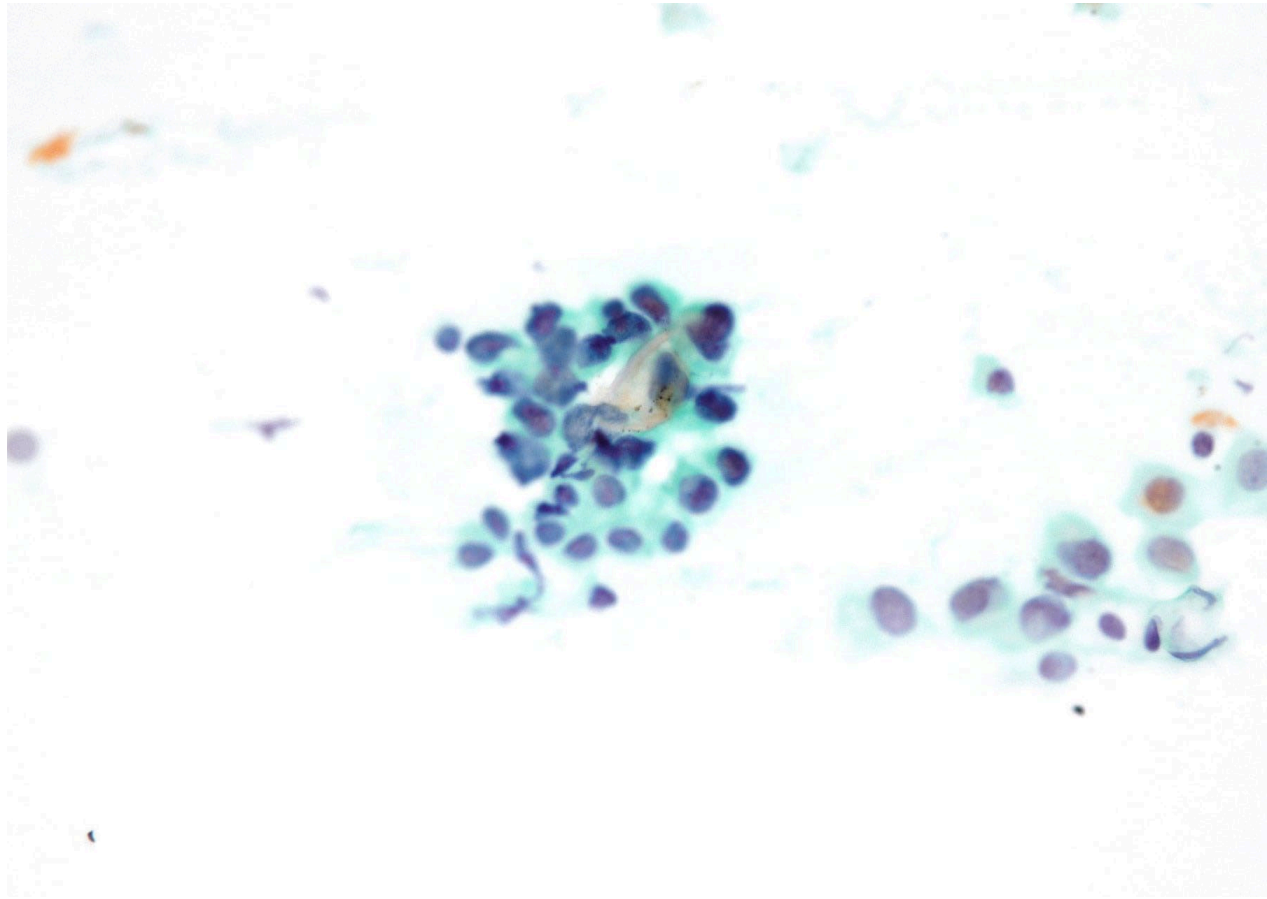












Your interpretation ?

Biopsy proved metastatic breast
cancer

References

